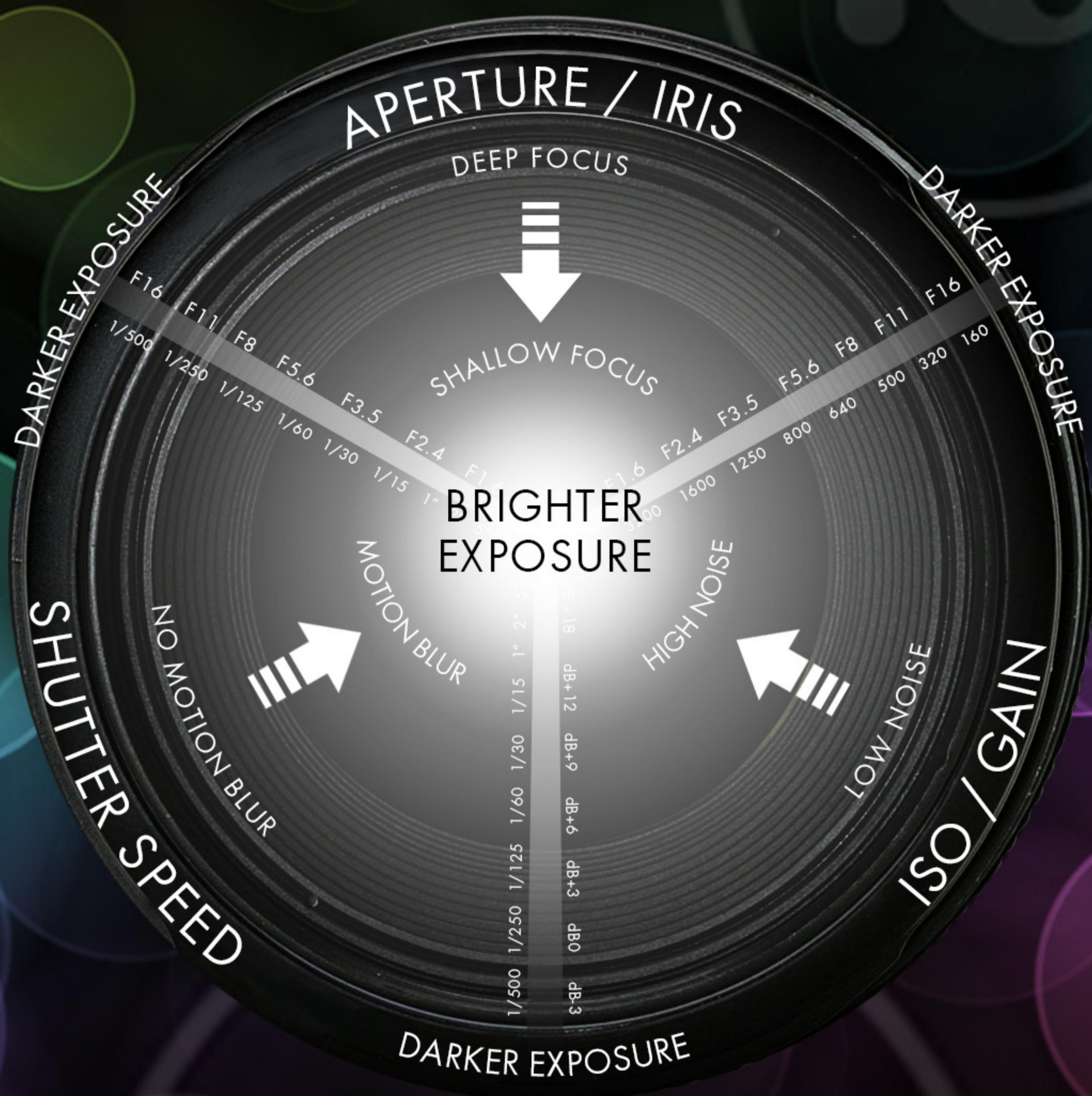


The 3 Elements of Exposure

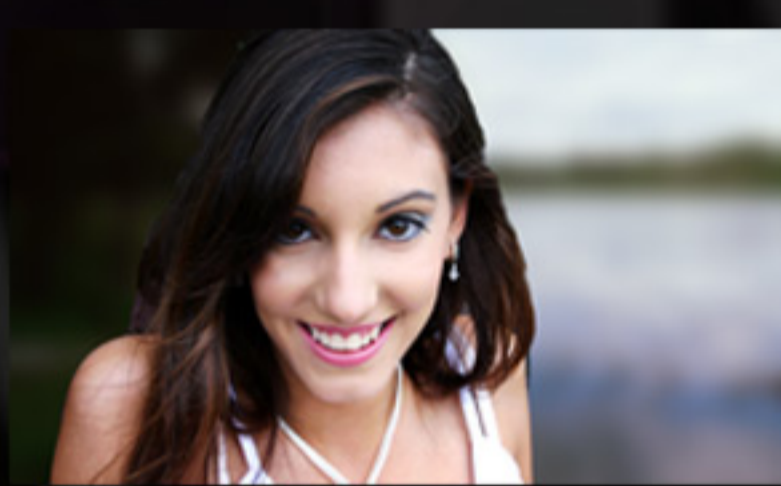
The terms APERTURE and ISO are commonly found on Still Cameras and HDSLRs.
IRIS and GAIN are terms used for traditional video cameras.



APERTURE / IRIS

How big is the hole letting light into the camera
Smaller FStop means larger hole & brighter exposure

F1.6 F2.4 F3.5 F5.6 F8 F11 F16 F32
BRIGHTER EXPOSURE SHALLOW FOCUS (SMALL DEPTH OF FIELD) DARKER EXPOSURE DEEP FOCUS (LARGE DEPTH OF FIELD)



SHUTTER SPEED

How long will the sensor gather light for the image
Measured in seconds or fractions of a second

5" 2.5" 1" 1/15 1/30 1/60 1/120 1/250 1/500 1/1000
BRIGHTER EXPOSURE LARGE AMOUNTS OF MOTION BLUR DARKER EXPOSURE SHARPER IMAGES WITHOUT BLUR

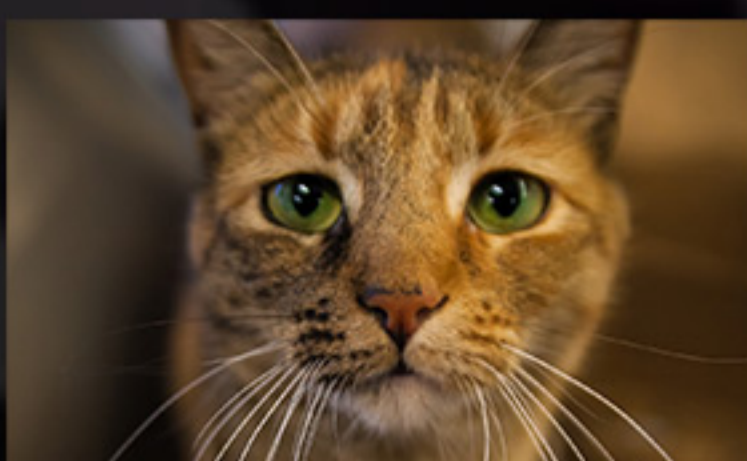


ISO / GAIN

How sensitive the sensor is to light
Higher Values means more sensitive (Video Gain is in dB)

6400 3200 1600 1250 800 650 500 400 320 160 100
dB+18 +12 +9 +6 +3 0 -3

BRIGHTER EXPOSURE LOTS OF DIGITAL NOISE DARKER EXPOSURE VERY LITTLE DIGITAL NOISE



ND FILTERS

Reduces the amount of light entering the lens

